

Chorley  
Council

Planning  
Committee Meeting

11 October 2022



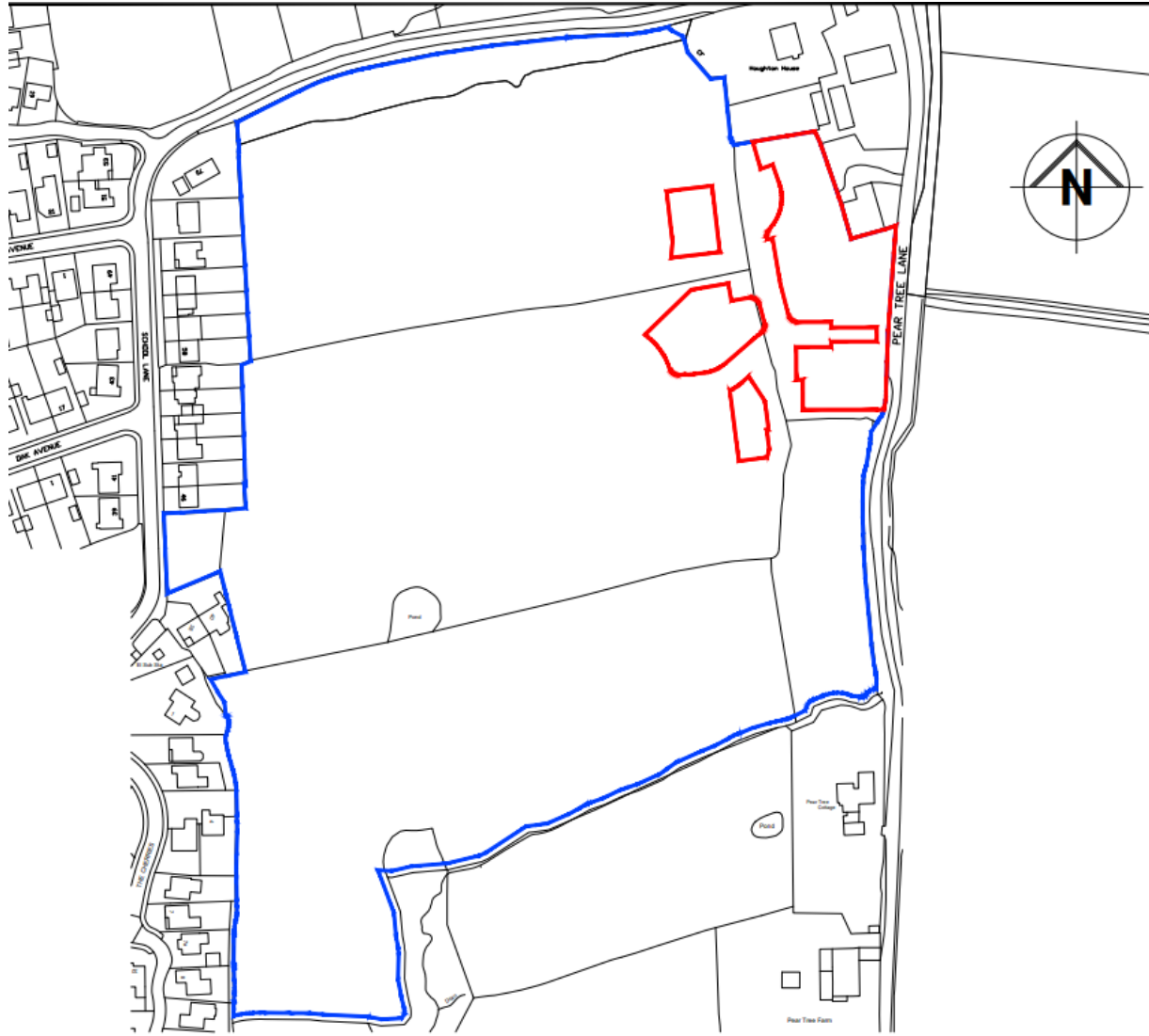
# Item 3g

21/00635/REMAJ

Land Between Pear Tree Lane And School Lane  
Pear Tree Lane, Euxton

Reserved matters application (appearance, landscaping, layout, and scale) for the erection of 131no. dwellings and associated infrastructure pursuant to outline planning permission ref: 19/00654/OUTMAJ / appeal ref: APP/D2320/W/20/3247136

# Location plan



# Aerial Photo



# Site layout plan



# Reynold House Type



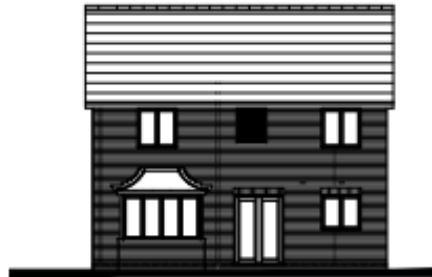
front elevation



side elevation



side elevation



rear elevation

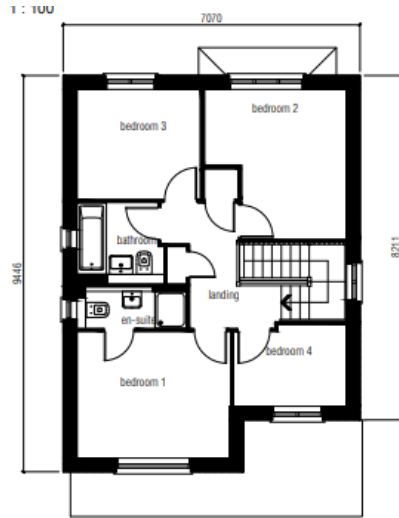


GROUND FLOOR PLAN

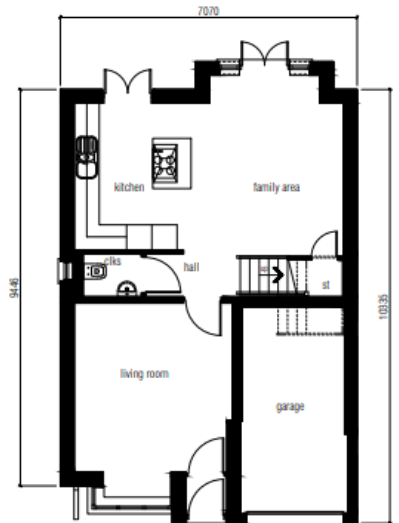


FIRST FLOOR PLAN

# Bowes House Type



FIRST FLOOR PLAN



GROUND FLOOR PLAN



FRONT ELEVATION



SIDE ELEVATION



REAR ELEVATION



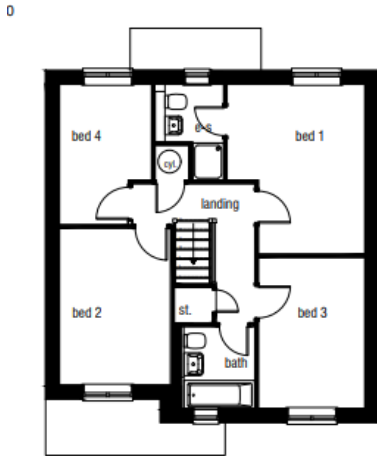
SIDE ELEVATION

# Bonington House Type

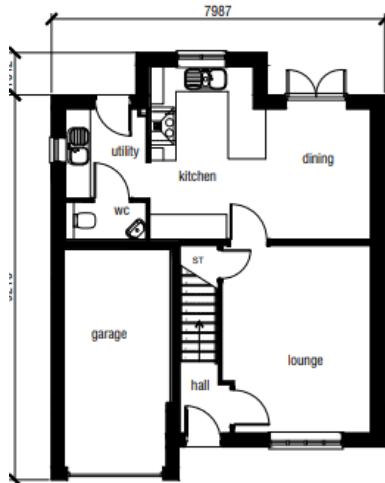




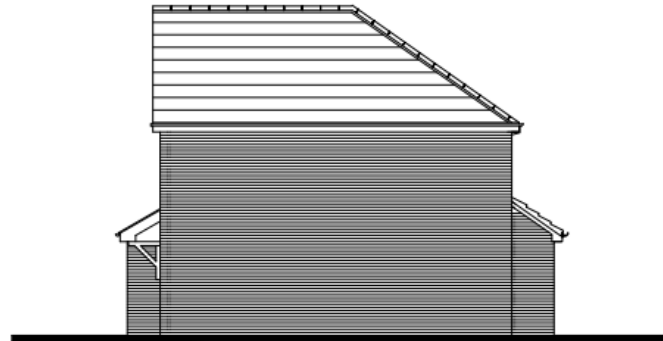
# Holbrook House Type



FIRST FLOOR PLAN



GROUND FLOOR PLAN



SIDE ELEVATION



FRONT ELEVATION

REAR ELEVATION



SIDE ELEVATION

FLOOR AREA: 1119sq.ft. 104.00sq.m. (excluding garage)

# Brantwood House Type



FRONT ELEVATION

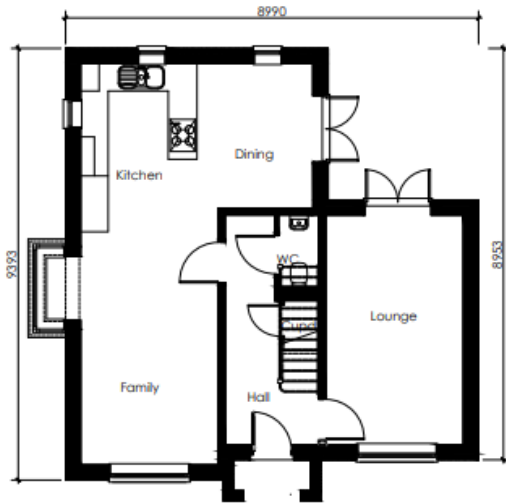
7449  
4875



SIDE ELEVATION



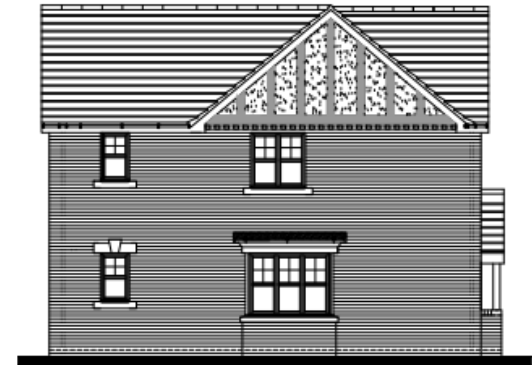
REAR ELEVATION



GROUND FLOOR PLAN



FIRST FLOOR PLAN



SIDE ELEVATION

Floor Area - 122.34sqm/1317sqft

A At store call added to bay window.

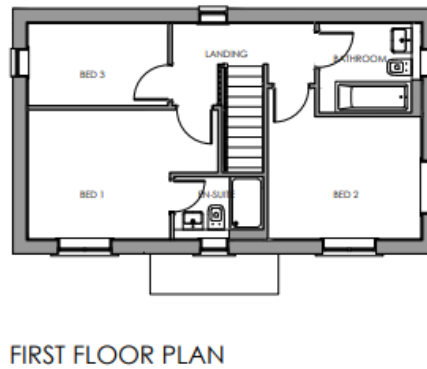
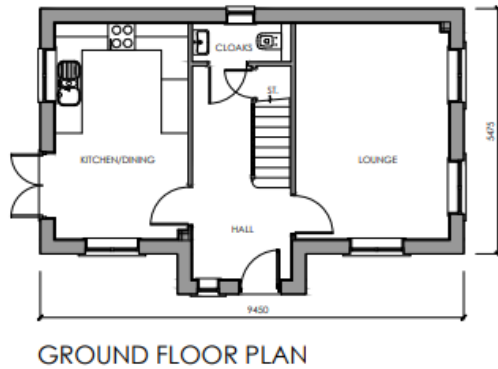
REV	DESCRIPTION

**Rowland**

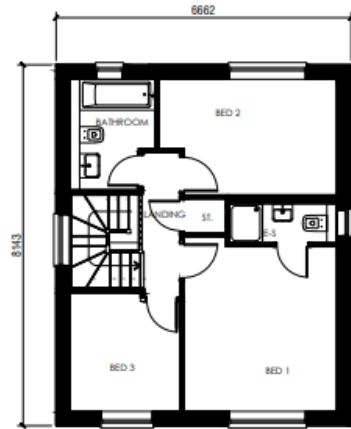
Rowland Homes Ltd  
 Farningham House, Stanfield Business Park  
 Leyland, Lancashire P  
 Tel: 01772 421144 Fax: 01772 423352

08/06/10

# Bressingham House Type



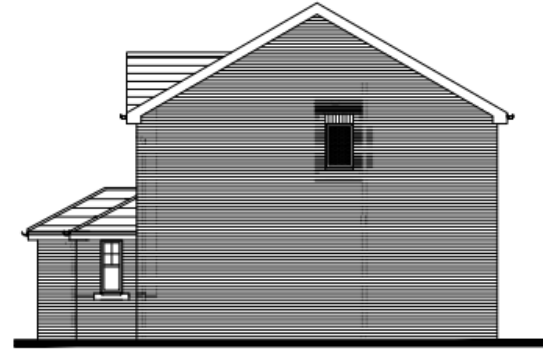
# Adlington House Type



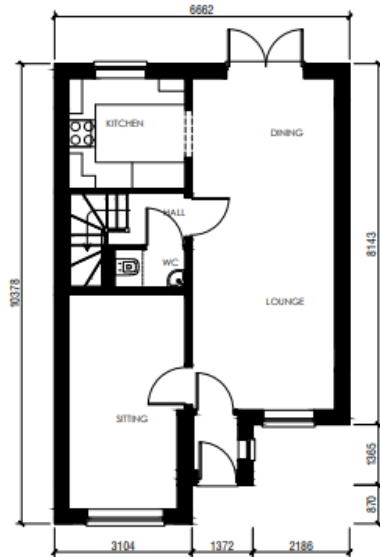
FIRST FLOOR



FRONT ELEVATION



SIDE ELEVATION



REAR ELEVATION



SIDE ELEVATION

# Site photos



# Site photos

